



GEM

GLOBAL
EMPOWERMENT
MISSION

2020 ANNUAL REPORT





OUR MISSION

Global Empowerment Mission aims to provide grassroots efforts with a large institutional impact for the most vulnerable populations affected by disasters around the world.

Global Empowerment Mission is dedicated to restoring hope and opportunity in the lives of those most affected by natural disasters. The organization works as a first responder for disaster relief, bridges the gap between first response and development, and implements practices to ensure sustainable development.

In addition to the three planned phases, G.E.M. operates year-round programming that focuses on school and home reconstruction, education and empowerment, and environmental and health programs. The program goals are to bring people back to normalcy and elevate communities beyond the cycle of disaster response. The outcome of these programs is to provide long-term redevelopment, which mitigates the psychosocial impact of displacement. These programs create independence through sustainable initiatives as the communities have a vested interest in the programs and grow and improve them on their own.





INDEX

3....	Message from our Founder, Michael Capponi
4....	Our Work
6....	Donor Specific Funds & Strategic Partners
7....	Mission Spotlights
	Covid 19 Pandemic
	U.S. Small Business Rebuild
	Bahamas, Hurricane Dorian
	Australia, Fires
	Puerto Rico, Earthquakes
	Tennessee, Tornadoes
	Gulf Coast, Hurricane Laura
	California, Fires
	Oregon, Fires
	Beirut, Explosion
	Central America, Hurricanes Eta & Iota
	Haiti, Sustainable Development
	Lesbos, Greece Fire
21....	Program Spotlights
	School Rebuild
	Home Rebuilds
	Sponsor-A-Child
26....	Partners
27....	Financials
	Our accomplishments
	Statement of financial position
	Our 2020 Cash Donors
	Our 2020 In Kind Donors
32....	Board of Directors



A MESSAGE FROM OUR PRESIDENT AND FOUNDER

Dear Friends,

Many but not all disasters capture the world's attention. Media outlets blitz their coverage and saturate the airwaves with images depicting the severity and intensity of the impact, leaving the aftermath heartbreaking. Homes, schools and businesses are destroyed, devastating families, communities, and entire cities.

This is the unfortunate cycle of disasters we see in countries throughout the world. The setbacks caused by long recoveries are felt by the global community for generations.

Effective disaster relief programs must incorporate more than just emergency response. That is why the Global Empowerment Mission responds with three phases of disaster response (emergency, gap period and sustainable response) ensuring communities recover from disasters keeping the short and long-term impact of the disaster to a minimum.

This year Global Empowerment Mission responded to: Australia fires, Puerto Rico Earthquakes, Tennessee Tornadoes, Beirut Explosion, Gulf Coast Hurricanes, Greece Fires, Oregon fires, California fires, Central America Hurricanes ETA and Iota, and Covid-19 response in all 50 US States while continuing our sustained response work in Haiti and to Hurricane Dorian initiatives in the Bahamas. We have grown our existing School and Home Rebuild, Empowerment and Wellness, Education, and Tool programs while launching our Sponsor a Child program.

To date, Global Empowerment Mission has championed 304 missions in countries distributing over 110 million in aid and supplies and 7 million P.P.E. items in all 50 US States and many Caribbean countries.

I am honored to share the stories and photos of children, families, and communities where Global Empowerment Mission has made a lasting impact. On behalf of them and the millions of people whose lives were brightened by your support; we thank you!

***With Gratitude,
Michael Capponi***





OUR WORK

VISION

GEM aims to provide grassroots efforts with a large institutional impact for the most vulnerable populations affected by natural disasters around the world.

MISSION

GEM is dedicated to restoring hope and opportunity in the lives of those most affected by natural disasters. The organization works as a first responder for disaster relief, bridges the gap between first response and sustainable development, and implements practices to ensure sustainable development.

ORGANIZATIONAL DIFFERENTIATORS

1. Smart partnerships with local organizations and government agencies
2. Creative solutions to complex humanitarian emergencies
3. Creation of uniquely specific funds for donors with customizable outcomes
4. The highest degree of fundraising efficiencies
5. Participates in three planned phases of disaster response
6. Works in the gap period between first response and sustainable Development





OUR WORK

To make a consistent life-changing global impact, our work focuses on:
First Response, Bridging the Gap to Development and Sustainable Development.

1ST RESPONSE PHASE - DISASTER RELIEF

Immediate response to global disasters and civic emergencies. Goal is to restore hope and opportunity in the lives of those most affected. In times of crisis, GEM has led groups of emergency first responder's firefighters, doctors and nurses to hard-hit areas. These teams have provided emergency lifesaving care to tens of thousands suffering injuries from natural disasters. The ability to arrive on the scene quickly is absolutely critical to saving lives.

Our work in this phases consists of:

1. Reconnaissance and assessment
2. Search, rescue, and loss mitigation
3. Identify and form strategic partnerships

2ND RESPONSE PHASE - THE GAP PERIOD

Time between first response and government or other permanent infrastructure. Goal to minimize the time in which this gap period exists.

Our work in this phase consists of:

1. Temporary housing and shelter
2. Establish criteria, beneficiary identification and distribution of vital funds
3. Stabilization efforts and sustenance supplies

3RD RESPONSE PHASE - SUSTAINABLE DEVELOPMENT

Long Term response in coordination with governments and public private partners. Goal to create a self sufficient and thriving community GEM provides quality education, diverse vocational training and job creation to people in developing countries, such as Haiti. The objective is for people to have a self-sufficient and sustainable economy, ultimately eliminating their dependency on foreign aid.

Our work in this phase consists of:

1. Permanent and durable housing and infrastructure
2. Facilitator of economic and educational programs
3. Implementing empowerment and livelihood programs





DONOR SPECIFIC FUNDS & STRATEGIC PARTNERS

Global Empowerment Mission is appreciative to all of our partners and major gift donors whose generosity helps us restore hope and opportunity in the lives of those most affected by disasters.

One of the differentiating factors of the organization is its unique ability to create donor specific funds with customizable outcomes. Within the architecture of the organization, there are strategic partnerships with its own set of initiatives and goals powered by Global Empowerment Mission. These partnerships are a direct result of alignment and deeper engagement with philanthropists.

Global Empowerment Mission is proud to be the official **#BStrong** initiative partner! **Bethenny Frankel's #BStrong** program is a disaster relief initiative that provides real time emergency assistance to individuals and their families in crisis.

Since the launch of the **#BStrong Initiative** in 2017 it has raised and distributed millions of dollars in cash and supplies for victims of natural disasters around the world.

In the United States, Puerto Rico, South America, the Caribbean islands and now Australia, children, families, women, and men whose lives have been upended by catastrophe have found a helping hand and a start at recovery through programs provided by **#BStrong**.



bstrong



MISSION SPOTLIGHTS





COVID-19 RESPONSE MISSIONS: ALL 50 US STATES



GEM IMPACT PHASE I:

Global Empowerment Mission, BStrong responded in the first phase, disaster relief, by providing over eight million dollars worth of Personal Protective Equipment to 700+ facilities in all 50 U.S. States.

700+ FACILITIES SERVICED:

- Hospitals and Clinics: **477+**
- Police and Fire Departments: **26**
- Nursing Homes: **50**
- State Health Departments: **8**
- Funeral Homes: **4**
- Military bases: **7**
- Other: **50+**

\$1,350,000.00 OF FINANCIAL GRANTS DISBURSED:

- State of Arizona **\$500,000.00**
- Medstar Health Systems **\$500,000.00**
- Inova Health **\$200,000.00**
- State of Indiana **\$150,000.00**



GEM IMPACT PHASE II:

Global Empowerment Mission, BStrong responded in the second phase, the gap period, by distributing cash cards to those severely impacted by Covid-19 within the U.S. Our “Back-to-School” initiative was also launched in Broward County, with distribution of ‘corona kits’ which contained PPE, hand sanitizer and masks, to help ensure schools were prepared to protect students upon their classroom return.

GEM IMPACT

- Distributed **\$8,555,665** worth of PPE supplies to **700+** facilities.
- Distribution of **\$150,600.00** Bstrong cash cards.





U.S. SMALL BUSINESS REBUILD

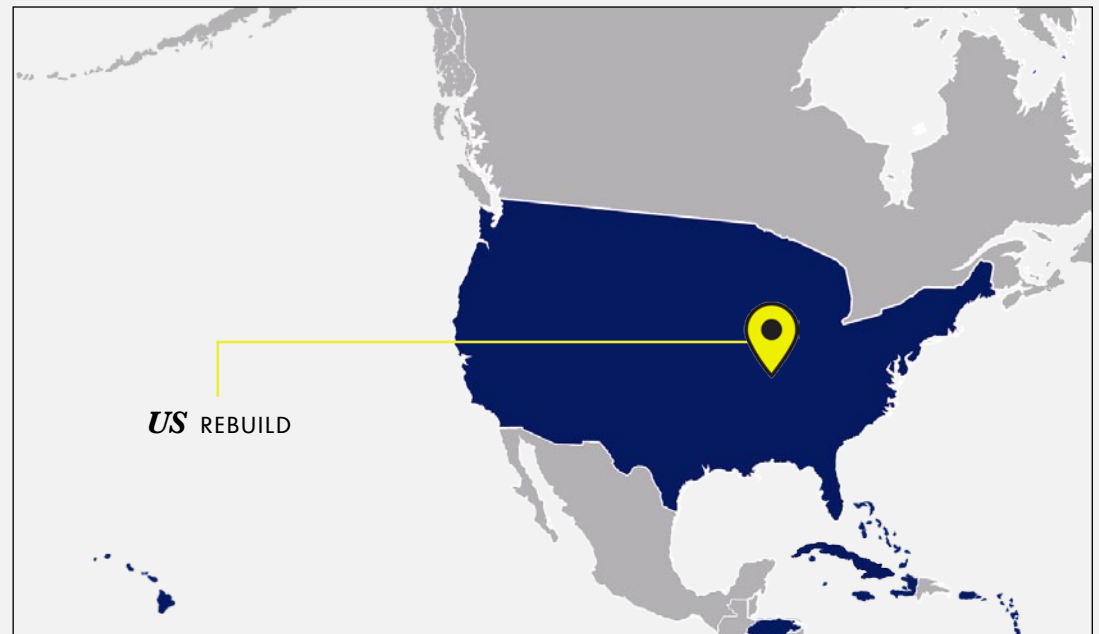
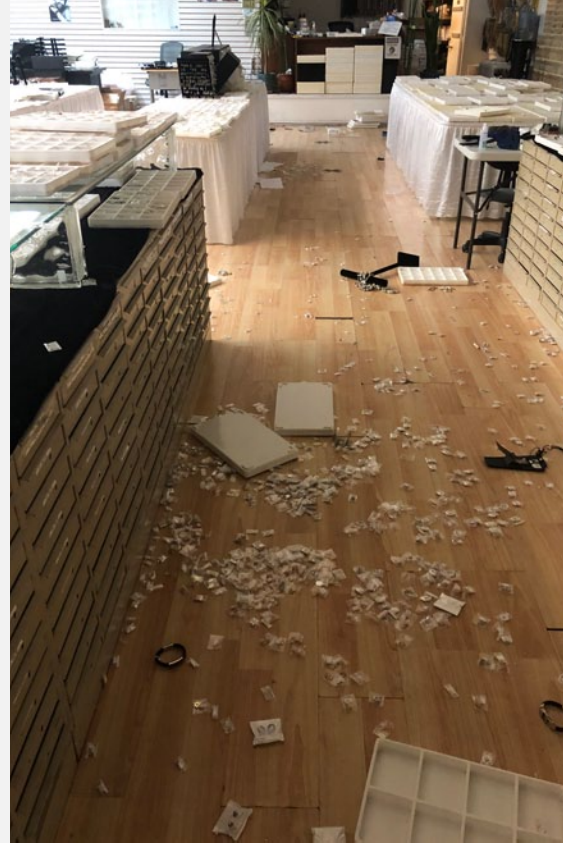


(PHASE I, II CYCLE)

Global Empowerment Mission, Bstrong mobilized to assist non-insured small business owners who suffered due to the Coronavirus Pandemic and recent civil unrest.

GEM IMPACT

- Throughout the first and second phase, this initiative has supported 100+ small business owners with **\$100,000.00** in Bstrong cash cards.





BAHAMAS HURRICANE DORIAN

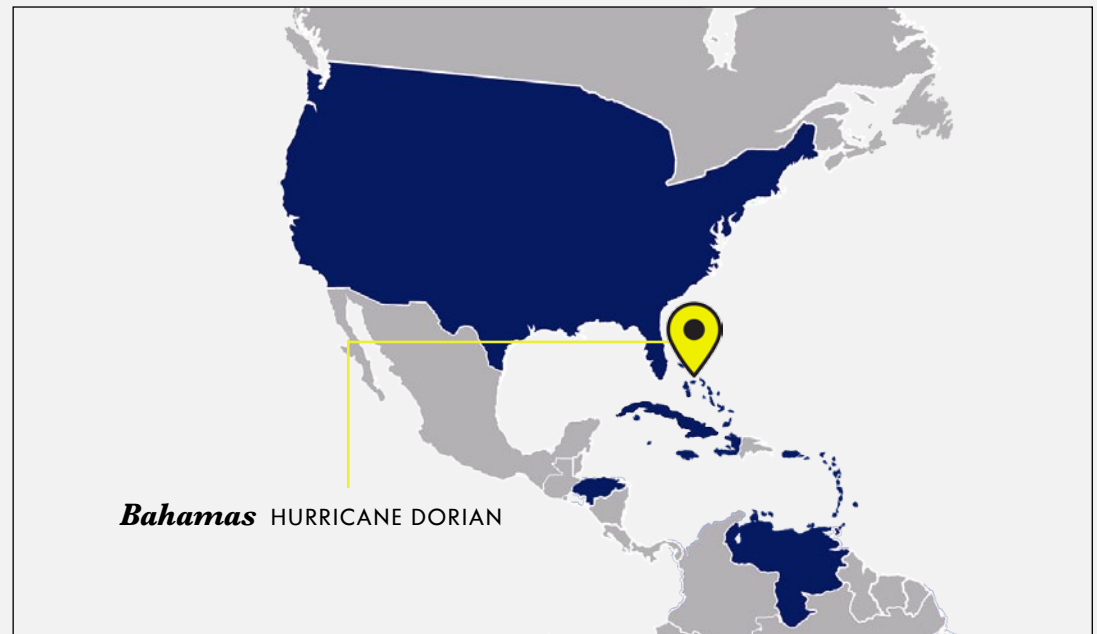


(PHASE I, II, III CYCLE)

Global Empowerment Mission, Bstrong continued operations from 2019 in the Bahamas after Hurricane Dorian, by responding with the second and third phase. Working towards long-term solutions in coordination with government, community leaders, and private partners, G.E.M. provided permanent housing and infrastructure (primary and secondary schools) helping create a thriving, self-sufficient community.

GEM IMPACT

- **\$1,063,883** worth of construction supplies & building materials procured and shipped.
- **8** barges of construction supplies sent to Abaco and Moore's Island.
- **120** homes repaired in North Abaco through our **Home Rebuild Program**.
- **3** Schools completely rebuilt through our **School Rebuild Program**.
- **1** commercial fishing boat donated through our **Adopt a Fisherman Program**.
- **\$13,956** worth of laptops provided for students and teachers through our **Laptop Initiative**.





AUSTRALIA FIRES



(PHASE I, II CYCLE)

Over 18 million hectares burned, destroying over 5,900 buildings and 2,800 homes in Australia. In addition to human fatalities, millions of animals were killed.

Global Empowerment Mission, BStrong responded in the first and second phase (disaster relief & gap period) by distributing cash cards in the Australian states of Victoria, NSW, Adelaide, and South Australia, including Kangaroo Island.

GEM IMPACT

- **\$11,338.00** was donated to animal hospitals in need.
- **\$178,332.00** of Bstrong cash cards given to displaced residents from the bush fires throughout 3 Australian states.





PUERTO RICO EARTHQUAKES



(PHASE I, II CYCLE)

Global Empowerment Mission, BStrong responded in the first phase, disaster relief, by distributing generators to elderly victims relying on dialysis machines. G.E.M. partnered with our Puerto Rico on-ground partner, ***Yo No Me Quito***, and was present within 48 hours of the January 7, 2020 earthquake.

Global Empowerment Mission, BStrong responded in the second phase (the gap period), by distributing gift cards to earthquake survivors in the towns of Ponce, Yauco, Guanayilla, Guanica and Peñuelas.

GEM IMPACT

- **\$30,070** BStrong gift cards given directly to earthquake survivors staying in shelters.





TENNESSEE TORNADOES



(PHASE I, II CYCLE)

On March 3, 2020, a deadly tornado outbreak affected West and Middle Tennessee, becoming the 6th costliest tornado in US history, and another that impacted areas in the western part of Cookeville.

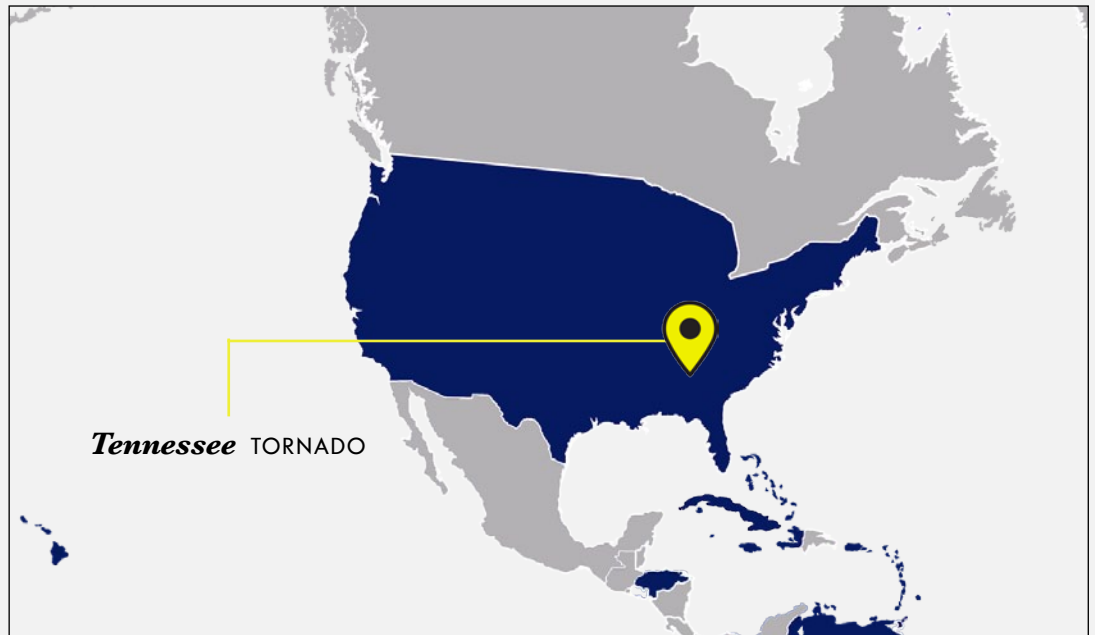
Global Empowerment Mission, Bstrong responded in the first phase of disaster relief by assisting low-income families in North Nashville.

G.E.M. shipped supplies from our Miami warehouse and our on-ground partnership with Bethel World Outreach enabled efficient aid distribution to families impacted by these 175 mph tornadoes.

Global Empowerment Mission, BStrong responded in the second phase, the gap period, with gift card distributions to families who lost their home.

GEM IMPACT

- **\$72,692** of relief supplies were shipped by Unlimited Carrier semi-truck for distribution in Nashville. Contents included sanitizers, hygiene kits, medical supplies, pet food, water, snacks.
- **\$13,100** distributed directly to victims in the form of visa cards.





GULF COAST HURRICANE LAURA



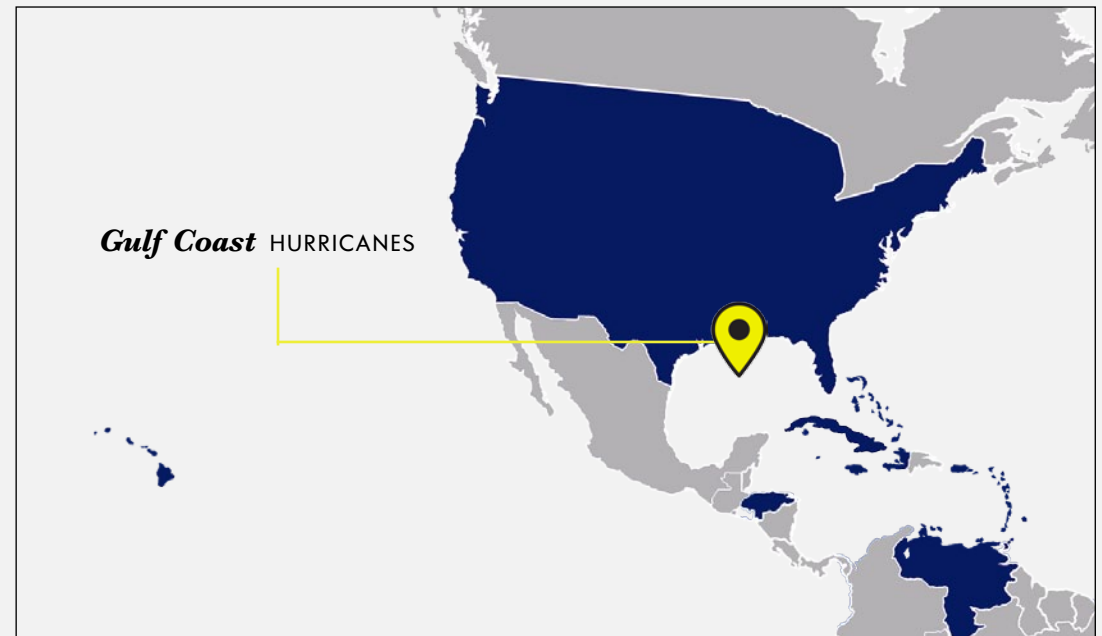
(PHASE I CYCLE)

Global Empowerment Mission, BStrong responded in the first phase by bringing trucks and planes full of PPE, masks, sanitizers and emergency aid for front line workers and shelters. The mission was coordinated with the Lake Charles Mayor's office, Homeland Security, Disaster Preparedness Agency and other local NGO local partners.

The National Guard helped with distribution in the second phase, as additional aid was sent to the affected areas.

GEM IMPACT

- **\$427,723** of relief supplies sent and distributed in Lake Charles and surrounding areas.





CALIFORNIA WILDFIRES



(PHASE I CYCLE)

Global Empowerment Mission, BStrong responded in the first phase, disaster relief, by providing immediate resources to those affected by the devastating fires in Northern California.

In phase 2, Global Empowerment Mission, Bstrong provided cash cards to the Bear Fire / North Complex and Glass Fires in Napa for survivors. Our relocation program initiative assisted those displaced by the fires.

GEM IMPACT

- **\$362,199** worth of food and aid were shipped in 4 semi-trucks, with additional trucks of PPE and tools being sent to assist with rebuild efforts.
- **\$36,000** in Bstrong cash cards were distributed.
- **\$16,200** was provided towards our relocation initiative.





OREGON WILDFIRES



(PHASE I CYCLE)

Global Empowerment Mission, BStrong responded to the Oregon Fires in its phase 1 initiative by partnering with the Brinker family to mobilize local ground teams, supplies and financial aid to Oregon's hardest hit regions.

- Riverside Fire (Mollala)
- Beachie Creek Fire (Scott's Mills, Mill City, Detroit, Gates, Lyons)
- Holiday Farm Fire (Blue River, Vida, McKenzie Bridge)
- Alameda Fire (Phoenix, Talent, Ashland)
- Echo Mountain Complex (Otis, Lincoln City)

Global Empowerment Mission and its Oregonian partner the Brinkers, responded with phase 2 programming which encompassed purchasing temporary shelter, tools and sustainable equipment to help rebuild the most affected areas.

GEM IMPACT

- G.E.M. deployed **\$448,692** of relief supplies and rebuild materials to support Oregon's hardest hit rural communities.
- **\$76,500** Bstrong cash cards were distributed directly to fire victims.





BEIRUT EXPLOSION



(PHASE I CYCLE)

In the wake of the August 4, 2020 explosion, hospitals in Beirut were lacking essential medical aid.

Global Empowerment Mission responded in phase 1 by partnering with Starbucks and Angel Flight East, transporting **1,600+ lbs** of critical medical supplies from Florida to Beirut.

GEM IMPACT

- **\$39,252,000** of medical aid and relief supplies sent to medical centers in Beirut.





CENTRAL AMERICA HURRICANES ETA & IOTA



(PHASE I CYCLE)

On October 31, 2020, the category 4 hurricane ETA hit Central America devastating the region, with Honduras reporting 57 dead and hundreds missing. On November 16, Category 5 hurricane Iota ravaged the region further.

Global Empowerment Mission, BStrong responded in the first phase, disaster relief, by supplying and distributing supplies directly to the people in need. G.E.M.'s on-ground partners ***Humanity and Hope United, Motorrad Angels, and Guatemala's Conred Agency*** also distributed our shipments of supplies, including water purification systems to the affected areas.

GEM IMPACT

- **\$315,000** worth of PPE and disaster relief sent in **6**, 40 ft containers.





HAITI SUSTAINABLE DEVELOPMENT



(PHASE III CYCLE)

Global Empowerment Mission has continued initiatives in Haiti and in 2020 responded in the third phase, sustainable development, by offering educational programs from elementary school to university level: Ecole Évangélique, Chrétienne de Lauture, Ecole Baptiste de St Cyr, and College Hosanna, Université Quisqueya.

The education, medical, and empowerment programs range from:

- Tuition
- Uniforms
- Lunches
- Transportation / Logistics
- Medical care
- Field trips
- After school care
- Private tutoring
- English classes

GEM IMPACT

- **\$18,348** provided for programs focused on food, housing and medical expenses.
- **\$5,215** allocated towards student events, banquets and graduation celebrations.
- **\$9,100** spent on school supplies.
- **\$34,643** assisted students tuition and housing costs.





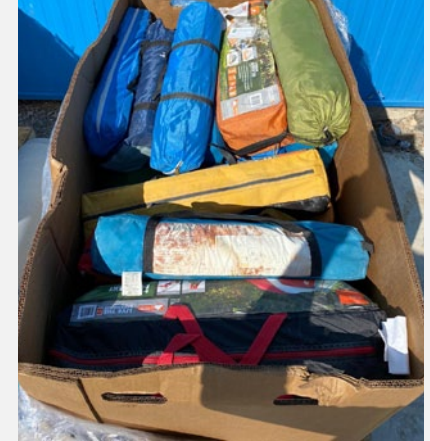
LESBOS, GREECE FIRE



(PHASE I, II CYCLE)

On September 9, 2020, a huge fire ripped through a massively overcrowded refugee camp in the Greek island of Lesbos. This caused over **13,000** people seeking asylum to be without shelter.

G.E.M. in partnership with Smart Aid, DHL Global & We Band Together responded in our Phase 2 initiative by sending hundreds of tents and lights in October 2020 to refugees suffering from heavy rains and flooding impacting the Island.





PROGRAM SPOTLIGHTS





SCHOOL REBUILDS



Our third phase, sustainable development, of disaster response includes the building and rebuilding of schools that were damaged by natural disasters. This helps communities return to normalcy.

COOPERS TOWN PRIMARY | BAHAMAS

Partner Benefactors:

Operation Pelican

Treasure Cay Community Foundation



SHERLIN C. BOOTLE SECONDARY | BAHAMAS

Partner Benefactors:

Eagles Wings Foundation

Discovery Land Company Foundation

Bahamas Relief Foundation





SCHOOL REBUILDS



Our third phase, sustainable development, of disaster response includes the building and rebuilding of schools that were damaged by natural disasters. This helps communities return to normalcy.

MOORE'S ISLAND ALL AGE | BAHAMAS

Partner Benefactor:

Siadat Family Foundation





HOME REBUILDS



Our third phase of disaster response, coordinated with government and public-private partners, includes rebuilding permanent and durable housing while implementing livelihood programs.

120 HOMES REBUILT | BAHAMAS

Partner Benefactors:

Discovery Land Company Foundation

BStrong

84 Lumber

TD Charitable

Bimini Shipping

Eagles Wings Foundation

ICS





SPONSOR-A-CHILD



HAITI

As part of GEM's long-term sustainable response, in coordination with the Government of Haiti and public / private partners, we are proud to make available the SPONSOR A CHILD initiative. Our goal is to create a self-sufficient and thriving communities by providing:

- ***Permanent and durable housing & infrastructure***
- ***Annual school tuitions***
- ***Laptop computer***
- ***School supplies, backpack, uniforms***
- ***Economic and educational programs***
- ***Empowerment and livelihood programs***
- ***Medical Care***
- ***Food allocations***



Step
1

DONATION

You may donate today through [online giving](#), by mail, or by phone.

[SPONSOR NOW](#)

Step
2

WELCOME KIT

Once your donation is processed, you will be contacted by GEM representative within 1-10 business days. You will receive a photo and details about your child, along with how to encourage them further through letters and yearly gifts. We also have an ability to set up What's App supervised chats with high school and college students.

Step
3

WATCH YOUR IMPACT

Your child will be changed knowing that someone else cares about their life! You will receive periodic updates on your child as new updates are received from Haiti.





PARTNERS

GEM and BStrong initiative acknowledges the following individuals, corporations, and foundations for their continuous year round support in supplying our warehouses with goods, transport, distribution, means to rebuild and volunteer teams.

- 4 Ocean
- 84 Lumber
- 212 Performance
- Arc Best
- Ark transportation
- Aventura Mall
- Bahamas Disaster Authority
- Badges of Honor
- Bahamas Consulate General
- Bahamas Relief Foundation
- Barry University
- Bethel World Outreach
- Bethenny Frankel
- Big Dog Ranch Rescue
- Bimini Shipping
- Blue Tide Marine
- Delta
- Cal Fire
- CIDM Haiti
- Cold Stone Creamery
- Discovery Land Company Foundation
- Dot Foods Inc
- Drip Drop
- Eagles Wings Foundation
- FEMA
- Gelmart International
- Good 360
- Gridline Properties
- Higher Dose
- Homer Bonner
- Immuse Immune Builder
- Jack Links Beef Jerky
- JNS Foods
- Manna Church
- Miami Beach Fire Rescue
- Miami Dade Fire Rescue
- Miami Rescue Mission
- Microsoft
- Northern Tool
- Northern Trust Bank
- Mobile Mike Radio
- Motorrad Angels
- Meals of Hope
- Open World Relief
- Raincoast Trading Ltd.
- Saco Foods Haiti
- Samantha Nazario
- Smart Aid
- SOS Hydration
- Syzygy Events International
- T.D Bank Charitable
- The Kabbalah Centre International
- Tropic Ocean Airways
- Siadat Family Foundation
- Starbucks
- UM Athletics Dept.
- UPS Foundation
- Virgin Voyages
- Yo No Me Quito



FINANCIALS





OUR ACCOMPLISHMENTS

TOTAL REVENUE
IN THE PAST
FISCAL YEAR
\$21,023,129

IN 2020, WE RAISED:

\$8,539,277 in cash donations

\$12,483,852 in kind donations

IN 2020, WE INVESTED:

\$15,355,558 to fund gem programs

\$1,010,092 to fund operating expenses

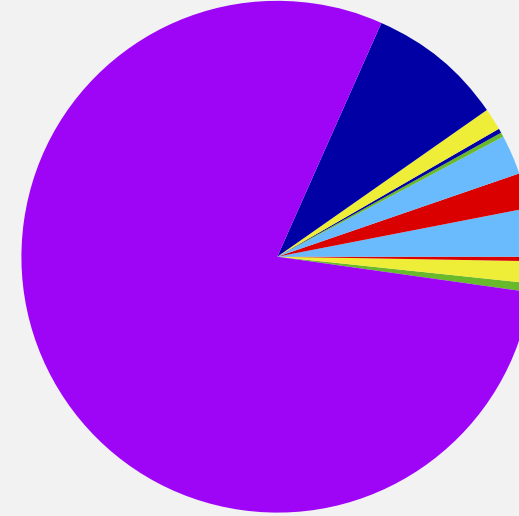
5,504,693 in aid supplies carried into
2021 to continue our missions





STATEMENT OF FINANCIAL POSITION

PROGRAMS SUPPORTED



MISSION SPOTLIGHTS

- COVID 19 Pandemic
- Bahamas Programs
- Australia Fires
- Puerto Rico Earthquakes
- US Small Businesses
- Tennessee Tornados
- Gulf Coast Hurricane Laura
- California Fires
- Oregon Fires
- Beirut Explosion
- Central America Hurricanes Eta & Iota
- Haiti Sustainable Development

REVENUE | INFLOWS

79,1% \$16,622,911
08,7% \$1,831,692
01,2% \$256,498
00,3% \$53,931
00,0% \$0
00,5% \$95,601
02,4% \$506,296
02,1% \$431,045
03,1% \$656,647
00,3% \$69,508
01,9% \$402,074
00,5% \$96,952

EXPENSES | OUTFLOWS

75,8% \$11,636,038
09,2% \$1,411,523
01,4% \$215,458
00,3% \$47,999
00,7% \$100,000
00,6% \$91,777
02,8% \$430,329
02,4% \$370,699
03,5% \$545,017
00,4% \$63,252
02,3% \$347,794
00,6% \$95,672

REVENUE | LESS EXPENSES

30,0% \$4,986,873
23,0% \$420,269
16,0% \$41,040
11,0% \$5,932
00,0% \$0
04,0% \$3,824
15,0% \$75,940
14,0% \$60,346
17,0% \$111,630
09,0% \$6,256
14,0% \$54,280
01,0% \$1,280

TOTAL

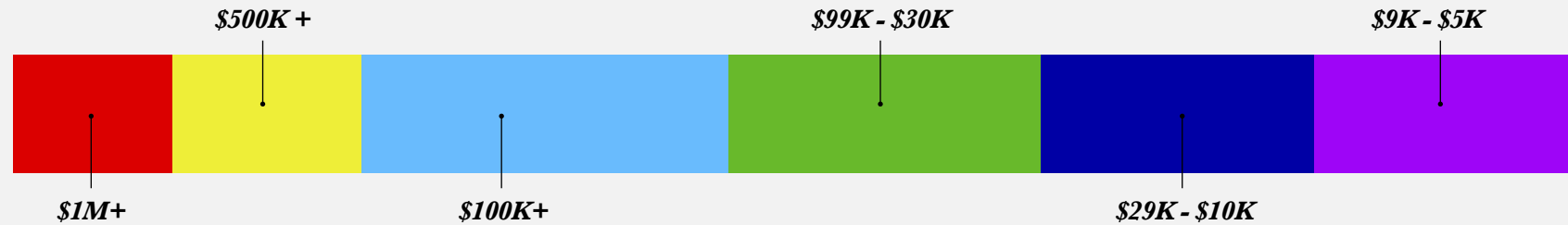
100% | \$21,023,129

100% | \$15,355,558

\$16,622,911



OUR 2020 CASH DONORS



FORMAL DONOR NAME

\$1M+

Verstanding Family Foundation

\$500K+

State of Louisiana

The Matthew & Camila Mcconaughey Foundation

The Joel Foundation

\$100K+

Hunton Andrews Kurth

Sue Hostetler & Beau Wrigley Family Foundation

Siadat Family Foundation

City of New York

Bahamas Relief Foundation

Charlize Africa Foundation

Eagle's Wings Foundation

Discovery Land Company Foundation

Shutterfly, Inc

Brenden Family Foundation

Kroenke Family Foundation

\$30K-\$99K

Certified Color Corporation

SelfHelp Community Services

St. Louis Community Foundation

Christopher Harding

David Harari

Daniel & Rosa Levy

\$29K-\$10K

Paul Bernon

Pharrell Williams

Evan Sacks

Stutzman Family Foundation

Sunshine Foundation

Downtown Development Authority

Paul Bernon

MJ Tax Services and more Inc

The Sence Foundation

Kotula Family Foundation

James Rozenthal

James Putra

Roma Burnett

Amy Schumer

Natalia Duma

Kurt Russell

Lena Dunham

Sunshine Foundation

Barbara Bradley Baekgaard

Family Foundation

Elisha-Bolton Foundation

Social Sisters

Lilah Hilliard Fisher Foundation

The Firmenich Charitable Foundation

Nina Dobрева

\$9K-\$5K

Andre Arpad

Melissa Freedman

Jen Freedman

Rayna Greenberg

HUGO BOSS

Florida Fence Distributors Inc

Jenny Dyer

Theresa Mersky

Yen Chiang-Lee

Luc Brinker

Antonio Mesquida

Mark Dowley

Carleen Tucker

Amy Schumer

Vanessa Hudgens

Ellen Pompeo

Neil Harris

Robert McCluney

Linda Caffrey

Josh Greenspan

Lisa Manz

Sara Tecchia

Maria Calanchini

Jourdan Hathaway

Matt Westbrook

Matt Klarberg

Adam Sebel

Morgan Stanley Gift Fund

The Elsie P. Van Buren Foundation

Craig Robins

Shannon Orr

JF Maddox Foundation

Mark Manifould

Michaelcheck Fund

Susan Mayer

Lilah Hilliard Fisher Foundation

Women As One Inc

David Stewart



OUR 2020 IN KIND DONORS

FORMAL DONOR NAME

\$1M+

Sexy Hair
Seegene Inc
Faber Foundation

\$500K+

DOT Foods

\$100K+

Integrity Vitamin and Supplement Group, LLC
Source Furniture LLC
Clif Bar & Company
Fulfillment Hub USA
Immuse Immune Builder
84 Lumber
SOS Hydration
Drip Drop
Feeding The Nations
Sexy Hair
Brownie Brittle
Drip Drop
Joshua Starr

\$30K-\$99K

Rex Discount
Acorn East
Immuse Immune Builder
Drip Drop
ULTIMA
Higher Dose
ULTIMA

\$29K-\$10K

Powell Communications
Younique/Royal Caribbean
Arc Transport
Higher Dose
Belgium Boys



BOARD OF DIRECTORS

Michael Capponi – **Founder / Executive Director**

Reid Boren - Chairman

Felicia Marquez – Vice Chairman

Michelle Boren - Secretary

William Dean

Dr Jay H. Park

Andres Fanjul

Zoe Robbins

Omar Rosario

Violet Camacho

India Hicks

Francine Delarosa

Rosy Levy



GEM

GLOBAL EMPOWERMENT MISSION

WWW.GLOBALEMPowerMENTMISSION.ORG