



# GEM

GLOBAL  
EMPOWERMENT  
MISSION

2019 ANNUAL REPORT







# OUR MISSION

***GEM is dedicated to restoring hope  
and opportunity in the lives of those  
most affected by natural disasters.***

The organization works as a first responder  
for disaster relief, bridges the gap between  
first response and sustainable development,  
and implements practices to ensure  
sustainable development.





# CONTENTS

<b>3</b>	Message from our founder
<b>4</b>	Our work
<b>6</b>	Strategic partners
<b>7</b>	GEM impact
<b>16</b>	Statement of financial position
<b>19</b>	Our donors
<b>21</b>	Board members



## A MESSAGE FROM OUR PRESIDENT AND FOUNDER

The frequency and severity of natural disasters reached historic levels and caused Global Empowerment Mission to expand its impact and reach in 2019.

It was a year of global crisis that activated Global Empowerment Mission's response to supporting survivors in the **California Wildfires**, supplying aid to those in the midst of **Venezuela Refugee Crisis**, providing water filtration systems to neglected villages impacted by the **Mozambique Tropical Cyclones**, distributing millions of lbs of aid and building materials to those communities devastated by the **Bahamas Hurricane Dorian**, and worked alongside fire fighters to control the **Bolivia Amazon Wildfires**.

For almost a decade, Global Empowerment Mission has been implementing **Haiti Sustainable Development** efforts through educational and empowerment programs. As we look to the year ahead, the organization's focus is to make these sustainable development initiatives available to the global community. The reason why this work is so important to us is that we know where we want our investments to go in order to make a consistent life-changing global impact. We are committed to serving in these three critical phases:

- First Response
- Bridging the Gap to Development
- Sustainable Development

Your compassion enabled us to efficiently and effectively address the needs on the ground immediately following these disasters and leverage relationships with community partners. We thrive on keeping you informed of your funding impact and invite you to follow our global progress on our social media channels. You can also visit the live updates section at [globlempowermentmission.org](http://globlempowermentmission.org).

Thanks to our dedicated supporters, hundreds of thousands of people received support in 2019.

Thank you for empowering those who need it most!

***With Gratitude,  
Michael Capponi***







## OUR WORK

### VISION

GEM aims to provide grassroots efforts with a large institutional impact for the most vulnerable populations affected by natural disasters around the world.

### MISSION

GEM is dedicated to restoring hope and opportunity in the lives of those most affected by natural disasters. The organization works as a first responder for disaster relief, bridges the gap between first response and sustainable development, and implements practices to ensure sustainable development.

### ORGANIZATIONAL DIFFERENTIATORS

1. Smart partnerships with local organizations and government agencies
2. Creative solutions to complex humanitarian emergencies
3. Creation of uniquely specific funds for donors with customizable outcomes
4. The highest degree of fundraising efficiencies
5. Participates in three planned phases of disaster response
6. Works in the gap period between first response and sustainable Development





## OUR WORK

To make a consistent life-changing global impact, our work focuses on:  
First Response, Bridging the Gap to Development and Sustainable Development.

### 1<sup>ST</sup> RESPONSE PHASE - DISASTER RELIEF

Immediate response to global disasters and civic emergencies. Goal is to restore hope and opportunity in the lives of those most affected. In times of crisis, GEM has led groups of emergency first responder's firefighters, doctors and nurses to hard-hit areas. These teams have provided emergency lifesaving care to tens of thousands suffering injuries from natural disasters. The ability to arrive on the scene quickly is absolutely critical to saving lives.

***Our work in this phases consists of:***

1. Reconnaissance and assessment
2. Search, rescue, and loss mitigation
3. Identify and form strategic partnerships

### 2<sup>ND</sup> RESPONSE PHASE - THE GAP PERIOD

Time between first response and government or other permanent infrastructure. Goal to minimize the time in which this gap period exists.

***Our work in this phase consists of:***

1. Temporary housing and shelter
2. Establish criteria, beneficiary identification and distribution of vital funds
3. Stabilization efforts and sustenance supplies

### 3<sup>RD</sup> RESPONSE PHASE - SUSTAINABLE DEVELOPMENT

Long Term response in coordination with governments and public private partners. Goal to create a self sufficient and thriving community GEM provides quality education, diverse vocational training and job creation to people in developing countries, such as Haiti. The objective is for people to have a self-sufficient and sustainable economy, ultimately eliminating their dependency on foreign aid.

***Our work in this phase consists of:***

1. Permanent and durable housing and infrastructure
2. Facilitator of economic and educational programs
3. Implementing empowerment and livelihood programs







## DONOR SPECIFIC FUNDS & STRATEGIC PARTNERS

Global Empowerment Mission is appreciative to all of our partners and major gift donors whose generosity helps us restore hope and opportunity in the lives of those most affected by disasters.

One of the differentiating factors of the organization is its unique ability to create donor specific funds with customizable outcomes. Within the architecture of the organization, there are strategic partnerships with its own set of initiatives and goals powered by Global Empowerment Mission. These partnerships are a direct result of alignment and deeper engagement with philanthropists.

Global Empowerment Mission is proud to be the official **#BStrong** initiative partner! **Bethenny Frankel's #BStrong** program is a disaster relief initiative that provides real time emergency assistance to individuals and their families in crisis.

Since the launch of the **#BStrong Initiative** in 2017 it has raised and distributed millions of dollars in cash and supplies for victims of natural disasters around the world.

In the United States, Puerto Rico, South America, the Caribbean islands and now Australia, children, families, women, and men whose lives have been upended by catastrophe have found a helping hand and a start at recovery through programs provided by **#BStrong**.



**bstrong**





# GEM IMPACT







## GEM IMPACT

### 2019

**200** HOMES UNDER RECONSTRUCTION

**6** COUNTRIES SERVED

**16** SUPPLY BARGES SENT

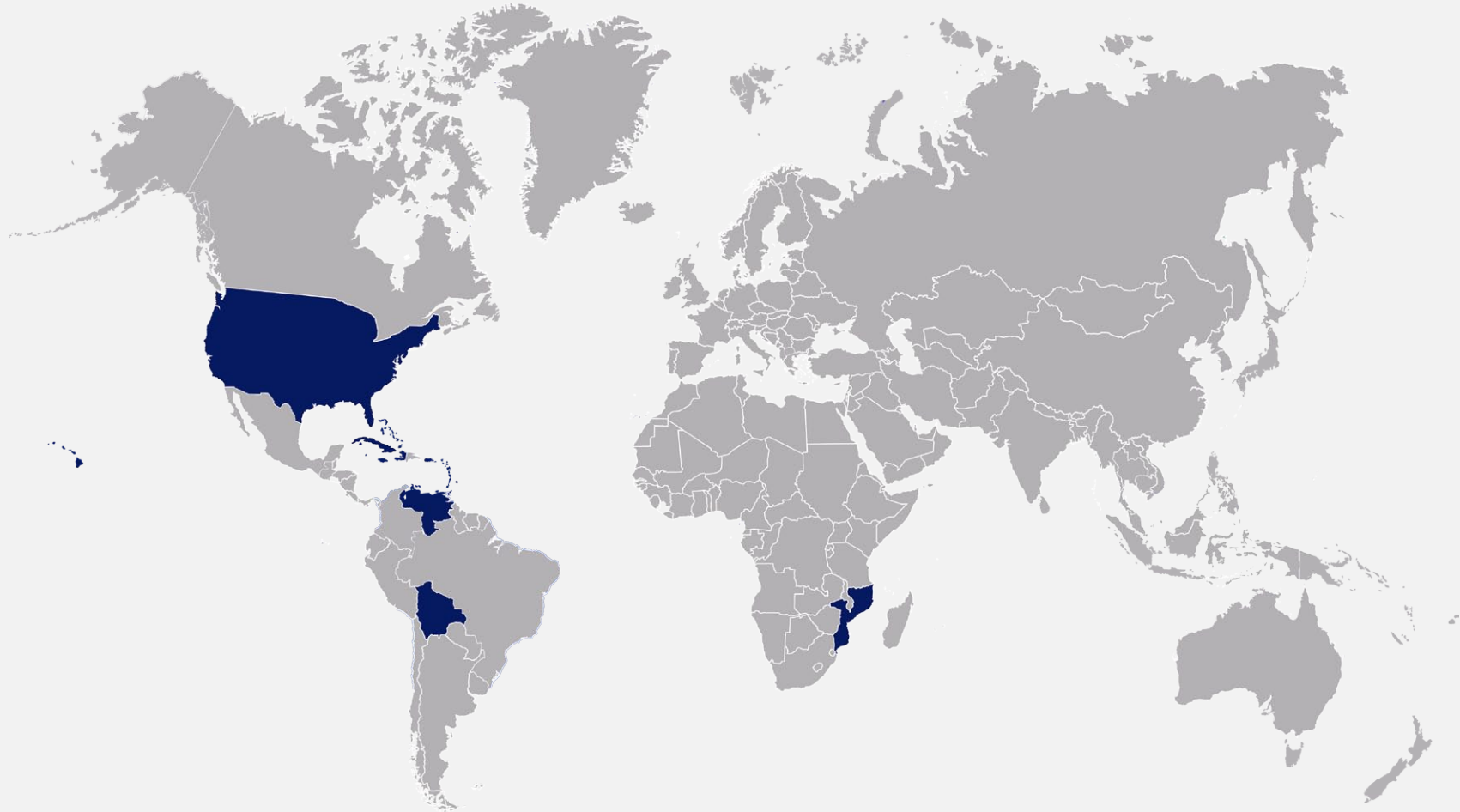
**30** PLANES WITH AID

**3** SCHOOLS UNDER CONSTRUCTION

**27** SCHOLARSHIPS AWARDED

**859** EMERGENCY EVACUATIONS

**700** AMAZON FIREFIGHTERS OUTFITTED





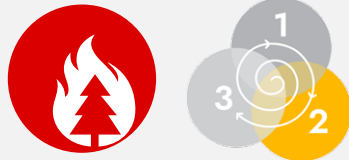
## GEM IMPACT







## CALIFORNIA WILDFIRES



### (PHASE II CYCLE)

Global Empowerment Mission responded in the second phase, the gap period, by establishing criteria, beneficiary identification and distribution of vital funds to survivors of the California Wildfires. Beneficiaries fell into very urgent situations from sleeping in cars to needing to relocate back to their home.

### GEM IMPACT

- **2,540** Beneficiaries
- Distributed **\$350,000** in direct cash cards underwritten by the #BStrong Initiative, Paradise Adopt a Family and North Valley Community Foundation:
  - **\$80,000** distributed amongst 2,000 beneficiaries
  - **\$270,000** distributed amongst 540 beneficiaries
- **\$1M** in donated in-kind supplies for 10,000 ppl
- Tools for **70** contractors







## VENEZUELA REFUGEE CRISIS



### (PHASE I CYCLE)

Global Empowerment Mission responded in the first phase, disaster relief, by providing an immediate response to the civic emergency for those in the midst of turmoil in Venezuela in partnership with **Motorrad Angels** and the **I Love Venezuela Foundation**. Thousands of people flee the country every day, mostly on foot, as the country has been unable to provide social services. As a result, Venezuelans face severe food and medicine shortages, as well as the continuing spread of infectious diseases. Venezuela's infrastructure has been poorly maintained recently, leading to a series of country-wide blackouts in March 2019 that left millions without power.

### GEM IMPACT

- Organized and facilitated **3 mission trips**
- Supplied aid to **2,400+** refugees in Cucuta, Colombia
- Supplied **medicine** and **medical equipment** to hospitals in Caracas, Venezuela







## MOZAMBIQUE TROPICAL CYCLONES



### (PHASE I CYCLE)

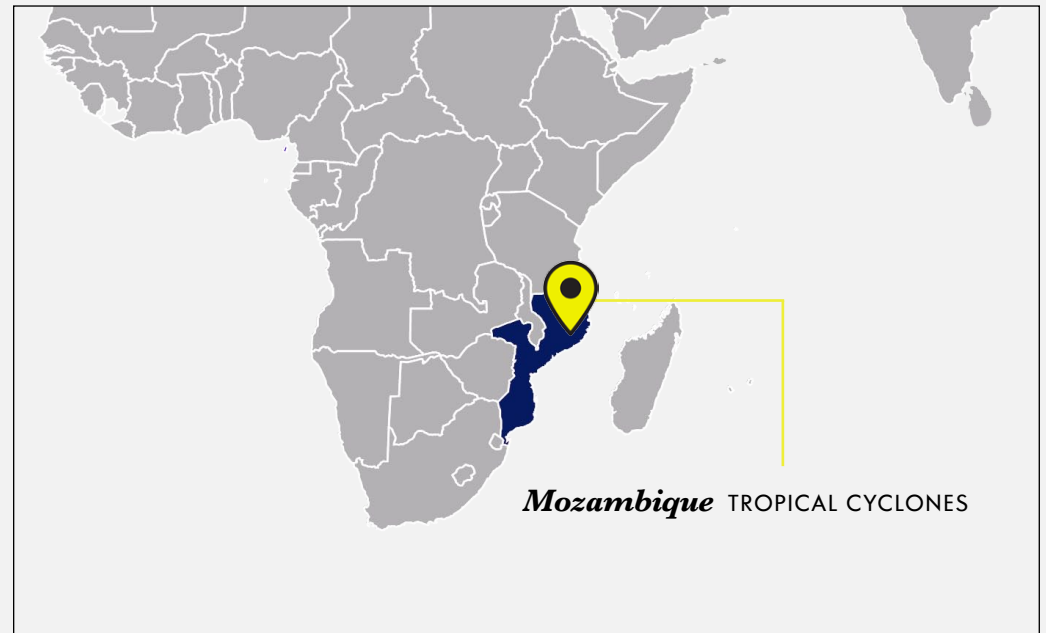
Global Empowerment Mission responded in the first phase, disaster relief, by providing water purification systems to those most affected by the tropical cyclones in Mozambique. The destructive storm caused catastrophic damage, and a humanitarian crisis in Mozambique, Zimbabwe, and Malawi, leaving more than 1,300 people dead and many more missing. The Global Empowerment Mission partnered with Local Development Catalyst Network (LDCN) to supply local health clinics, village leaders and schools with water purification systems to decrease the likelihood of more disease spreading.

### GEM IMPACT

- On ground **10 days after disaster**
- Walked with **over one ton** of aid through swamps, rivers and grass field for miles
- Over **30** villagers helped bring supplies to remote villages
- Provided **food** and **water filtration systems**
- Supported **Cholera prevention** programs to several neglected villages
- Repaired **Escola de Lamego**



*Each yellow bucket can be filled up to 75 times a day, producing 300 gallons of safe drinking water per day.*





## BAHAMAS HURRICANE DORIAN

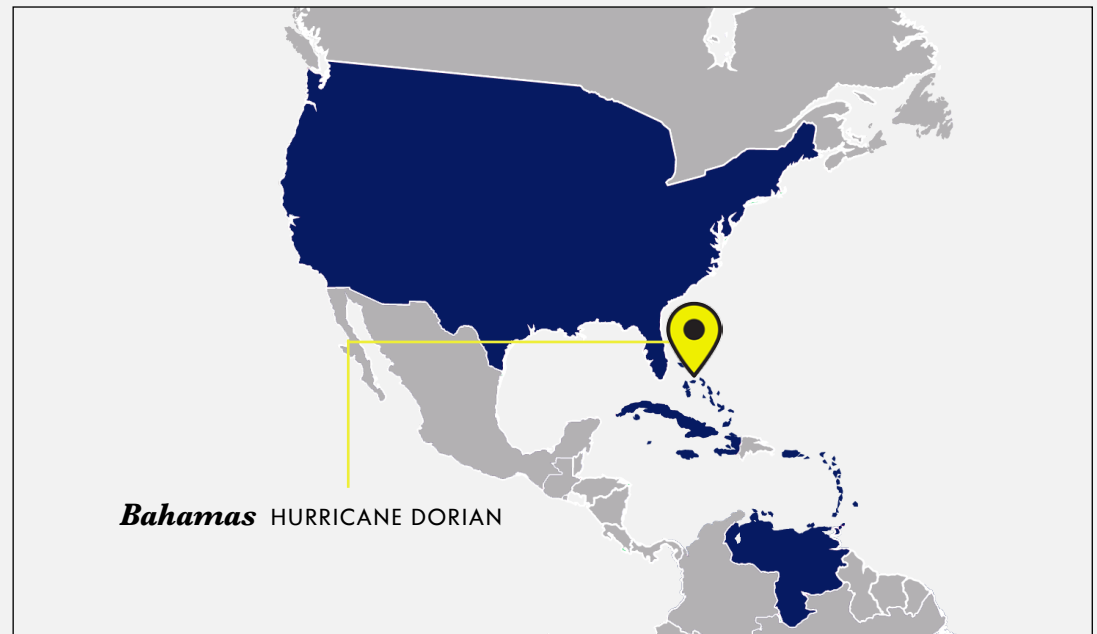


### (PHASE I, II, III CYCLE)

Global Empowerment Mission responded in the first phase, disaster relief, by providing an immediate response to the devastating Category 5 Hurricane that struck the Bahamas. To date, this storm has been regarded as the worst natural disaster in the country's history. Global Empowerment Mission responded in the second phase, the gap period, by distributing sustenance supplies. Global Empowerment Mission is currently responding in the third phase, sustainable development, by working with government and community leaders to provide permanent and durable housing and infrastructure (primary and secondary schools). Working towards a long term response in coordination with government, community leaders, and public private partners to create a self sufficient and thriving community.

### GEM IMPACT

- **859** People evacuated
- **6.5 million** lbs. of aid & building materials
- **\$33 million** of aid provided
- Rebuilding **3** schools & **256 +** homes
- Implementing **Plastic buy back** program
- Implementing **Adopt a fisherman** program







## BOLIVIA AMAZON WILDFIRES



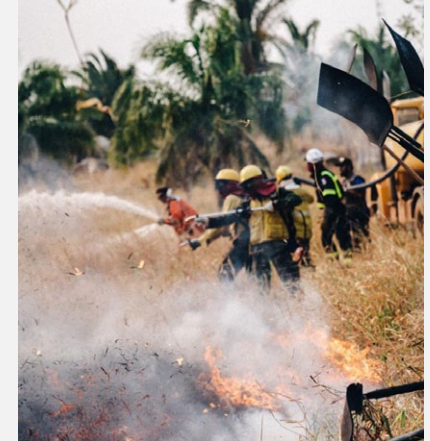
### (PHASE I CYCLE)

Global Empowerment Mission responded in the first phase, disaster relief, by supplying gear for 700 volunteer firefighters to control the Bolivia Amazon Wildfires.

### GEM IMPACT:

Partnered with Oxygen Seven, Indigenous Celebration and Pledge to Earth, within 3 days of being on ground to facilitate the following:

- Tank vehicles equipped with firefighter resources
- Water pumping equipment
- Temporary camp tents
- Electric pumps for pumping water wells
- Drone for inspections
- Satellite phones





## HAITI SUSTAINABLE DEVELOPMENT



### (PHASE III CYCLE)

Global Empowerment Mission is currently responding in the third phase, sustainable development, by offering educational programs from elementary school to university level: Ecole Évangélique, Chrétienne de Lauture, Ecole Baptiste de St Cyr and College Hosanna, Université Quisqueya.

The education, medical and empowerment program range from:

- Registration
- Tuition
- Uniforms
- Lunches
- Transportation
- Logistics
- Medical care
- Field trips
- After school care
- Private tutoring
- English classes

**“Education is the most POWERFUL weapon which you can use to change the WORLD ” - Nelson Mandela**

GEM INVESTING IN THE FUTURE







# FINANCIAL

# POSITION







## STATEMENT OF FINANCIAL POSITION

TOTAL REVENUE  
IN THE PAST  
FISCAL YEAR  
***\$36,491,441***

IN 2019, WE RAISED:  
***\$3,465,538*** in cash donations  
***\$33,025,903*** in kind donations

IN 2019, WE INVESTED:  
***\$34,315,463*** to fund GEM programs  
***\$612,250*** to fund operating expenses







## STATEMENT OF FINANCIAL POSITION

### - TOTAL NON-CASH DONATIONS \$33,025,903:

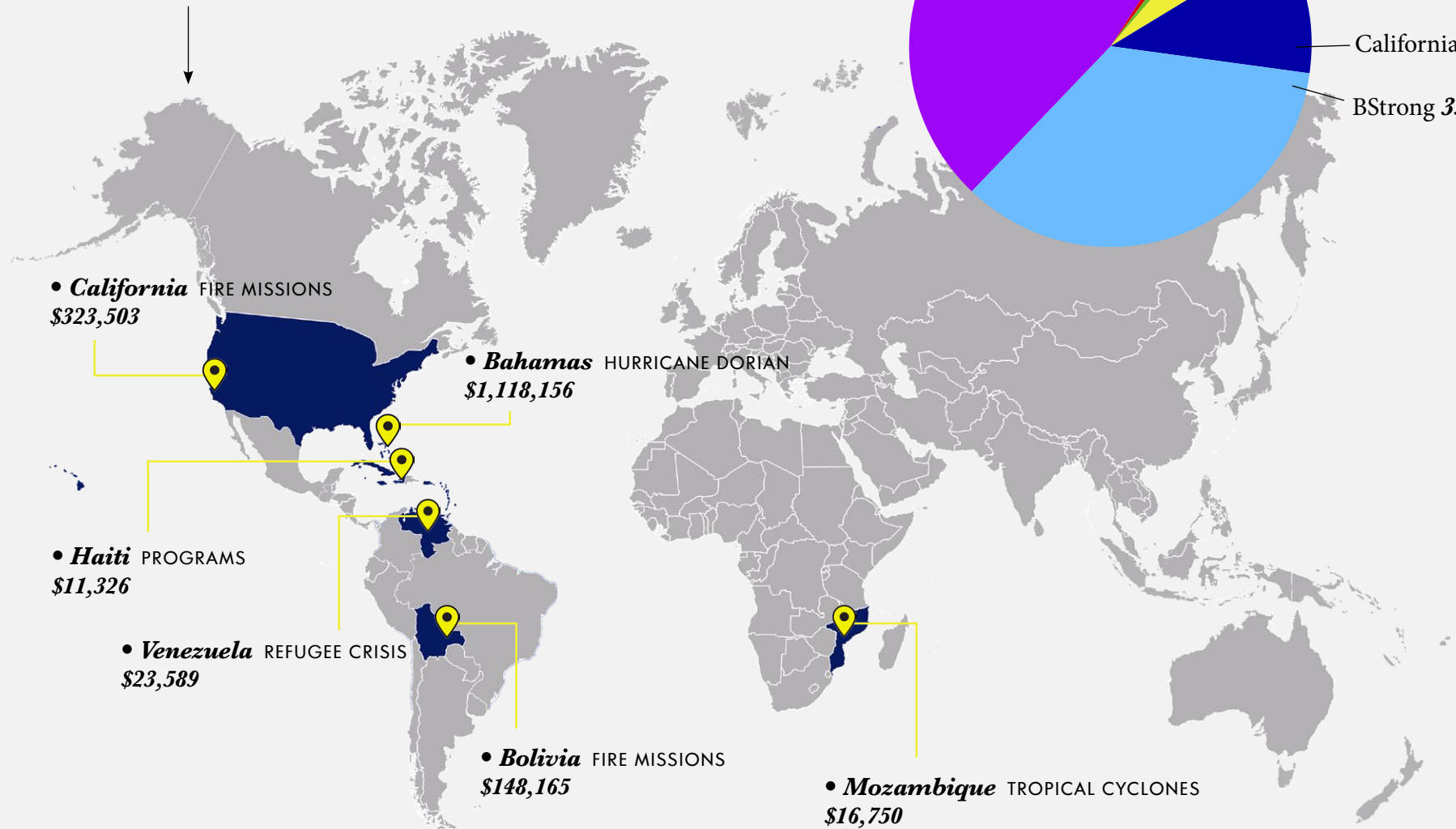
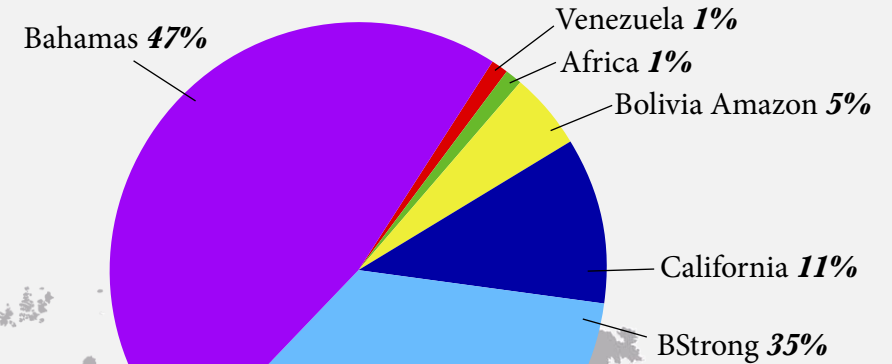
- Donated Good & Transportation Services \$33,025,903

### - TOTAL CASH DONATED \$3,465,538:

- General/Unrestricted \$862,703
- BStrong Initiatives \$961,319

### PROGRAMS SUPPORTED:

01/01/2019- 12/31/2019





## OUR 2019 CASH DONORS



### \$499K - \$100K

First Name/Org Name  
North Valley Community  
Foundation  
Kroenke Family Foundation

### \$99K - \$30K

Jefferies Llc  
India Hicks  
Butte Strong  
Francine Delarosa  
Virgin Voyages  
Samara Fund Inc  
South Motors Operating  
Mark Revitz  
Emily Miller  
Shervin Pischevar  
Lizzie Easton-Montes

### \$29K - \$10K

Michelle Daniels  
Deedly Inc.  
Billy And Sierra

Chris Mays  
National Philanthropic Trust  
Debbie Bickerstaff  
Moss Foundation  
Carter Taylor  
Joshua Tripp  
Dba Village Paper & Ink  
Gil Besing  
Donald M Sofer  
Landyn Hutchinson  
The Dunmore Hotel  
Nathan A Coe  
Cardinals Care  
Spaulding Ashley  
Salz Family Fund  
Virginia Salas Castillo  
Raymond James  
Marc J Leder  
Rosy Levi  
Charitable Lead Trust  
Karen Borin  
Jam Packaging Llc  
Gloria Estefan  
Centre Pointe  
Michael Ferro  
Daymond John  
Reid Boren

Donors Trust  
Southwest Florida Community  
Foundation  
Richard & Esther Schoonover  
Ara Cohen  
Rbg Inc.  
Global Uplift  
Douglas Brown  
Jay Roberts  
Rita Soto  
Pledge to Earth  
Oxygen Seven

### \$9,9K - \$5K

Wajeeha Ahmed  
Christina Rodriguez-Garcia  
Theresa Mersky  
Leverrier Inc.  
Hylo Fitness  
Anonymous  
Marzanna A Bielava  
Nutraimmune, Llc  
Samuel Dalember  
Chris Visco  
Michael Blades And Associates

Susan Sarandon  
Jennifer Roach  
Michelle Edelsburg  
Todd Herbst  
Brugh Family Foundation  
Christine M Gordon  
Kolby King  
Bonnie Martin Nelson  
Merrill Lynch  
Luci Johnson  
Timothy Lehman  
Laura Murray  
Adam Weitsman  
Jewish Community Foundation  
Los Angeles  
Aaron Permuy  
William Chandler  
John Leete  
The Jailhouse Craft Beer Bar  
Michael Clinton  
Beer Base Llc.  
Jeanne M Kenlee  
Matthew Goldstein  
Raphael Clemente  
Southwest Florida Community  
Foundation  
Circle Of Generosity





## OUR 2019 IN KIND DONORS

**\$4+M - \$1M**

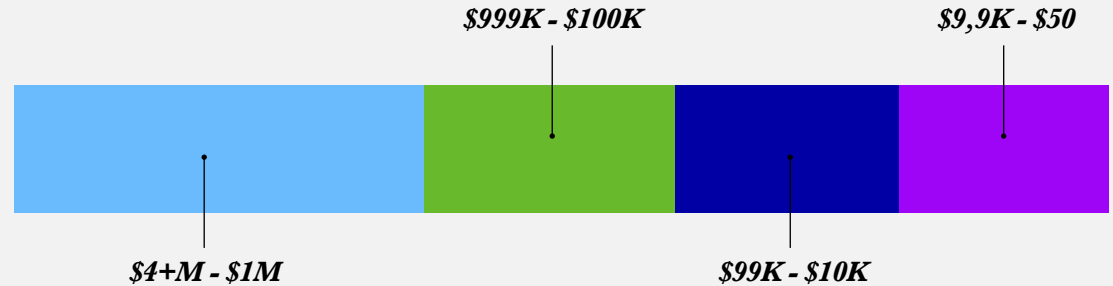
Big Dog Ranch Rescue/Holistic  
Pet Cuisine  
Mobile Mike Radio  
OpenWorldRelief.Org  
Curaleaf  
Jolie Paint  
Meals of Hope  
Scott Baxter  
Raincoast Trading Ltd.  
212 Performance  
Kemper Auto

**\$999K - \$100K**

Specialty Auto Leasing  
JNS Foods  
Monique Thompson  
AA Mills  
FIGS  
Fort Pierce Fire Department  
Westgate Resorts  
Real Fitness Sarasota  
Jack Links Beef Jerky  
Jonathan Fisher  
Francina Delarosa  
Miami Harley Davidson  
Kevin Brooks  
University of Florida  
SACRED SPACE WAREHOUSE  
Jonathan Fisher  
Riptide Marine  
CVS  
Pam Justice - Justice Law  
Tony Heath  
Syzygy Events International  
Sailfish Foundation  
Douglas Aziz  
Youfit Health Clubs  
Joe Del Vecchio  
Tropic Ocean Airways  
Mega Yacht Global  
Blue Tide Marine

**\$99K - \$10K**

Infinity Insurance Company/Ana  
Diaz  
COTY Cosmetics  
Katrina Touchstone  
Project Cure  
SE GROCERS  
CISCO Systems  
Food For The Poor  
Roberta Wanzecha  
SE GROCERS/C&S Wholesale  
Grocers partners  
Alexander Bestard  
Indigo Workplace  
Communications  
The Ultimate Legacy Carnival  
Troupe  
Ana Quincoces/305 Give Back  
(Skinny Latina LLC)  
Julio Villarreal  
Jacqueline Sanchez  
Morgan and Morgan  
Rodrigo Martinez  
Southern Glazers  
Blanchard Machinery  
Eden Robbins  
Crave Culinaire  
International Relief Group  
Meals for Hope - SC  
Stand Together For Haiti  
Foundation Corp.  
The Kaballah Center  
Onesha Dalba  
Brooklyn Bridge Rotary Club  
Caribbean American Center of NY  
SEDCO  
The Kabbalah Centre International  
Drip Drop  
Sylvia Garcia Swaun (DONATED  
BOAT)  
Automotive Art



Petit Peony  
Jackie Ortiz  
Saint Marys University in  
Minnesota  
Green Touch Homes  
Global.com  
Hampton Inn  
Turnberry Construction  
Gillian Love/BIG DOG RANCH  
Cindy Barrett  
Banesco USA  
Sylvia Garcia  
NUAGE Designs  
Marham High School  
Jack Links Beef Jerky  
Karen Miller  
GEMRT  
Aqua Boy  
Drip Drop  
Terrence Daniels  
Banesco USA  
1 First Bank  
Raincoast Seafood  
Patti Green  
Sailfish Foundation  
Garret McGuire Boots  
GoSun  
Edward Smith  
Michelle Sofer  
Immuse Immune

**\$9,9K - \$50**

Aetna CVS Health  
United Way  
JHS Miami  
Ana Quincoces/305 Give Back  
Grove Scuba  
Blackstar Companies  
Trusted Nutrients  
Play It Again Sports  
The Womens Group of KY  
IPG/Rocio Harb  
Orangetheory Fitness/Rebecca  
Kevin Craddock  
Roots of Sunshine  
IPG  
Sebastian Torres Modesti  
Grove Scuba  
Fathom Lures  
Markham District High School/  
Ontario  
Grafton Cosmetics  
John Marques  
Columbus Capital Lending  
University of Florida Student  
Starbucks  
EverywhereAire LLC  
University of Florida Student  
Financial Affairs  
Kristi Hoff  
Chris Stone

Miami Beach Medical Group  
Carrie Hellenbrecht  
Rosario Santiago  
The Ultimate Legacy Carnival  
Biosafe Supplies  
Carrie Hellenbrecht  
Fredrico Velesquez  
Republica Havas/Sedan  
Supermarkets



## OUR BOARD

### BOARD OF DIRECTORS

Andres Fanjul

Dr. Jay H Park

Zoe Robins

Michael Capponi **GEM Founder & CEO**

Violet Camacho

William H. Dean

Omar Rosario

### OFFICERS OF THE BOARD

Reid Boren | **Board chair**

Felicia Marquez | **Vice Board Chair**

Michelle Davis Boren | **Secretary**

### ADVISORY BOARD & JUNIOR COMMITTEE (JC)

Bethenny Frankel

Becky Brownel

Osvaldo Rios

Eve Xanthopoulos

India Hicks

John Marques

Carlos Ponce

Emily Fullmer

Dr. Murali Doraiswamy

Clif Loftin

Reza Budy

Kiera Smith

Jencarlos Canela

Kiko Alonso

Alison Pusey

Daniela Sage

Luis Velaquez

Carlos Alonso





THANK YOU!